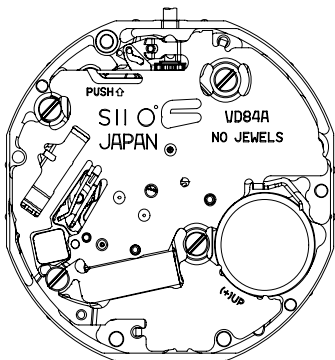
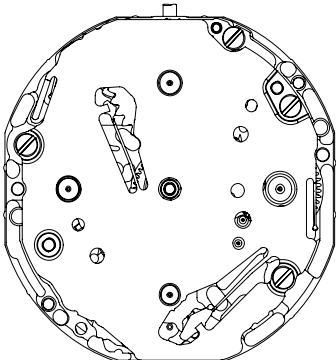


**TECHNICAL GUIDE**  
**&**  
**PARTS CATALOGUE**  
  
**Cal.VD8Serie**  
**(Cal.VD84/85/86/87A)**  
  
**ANALOGUE QUARTZ**

# PARTS CATALOGUE / TECHNICAL GUIDE

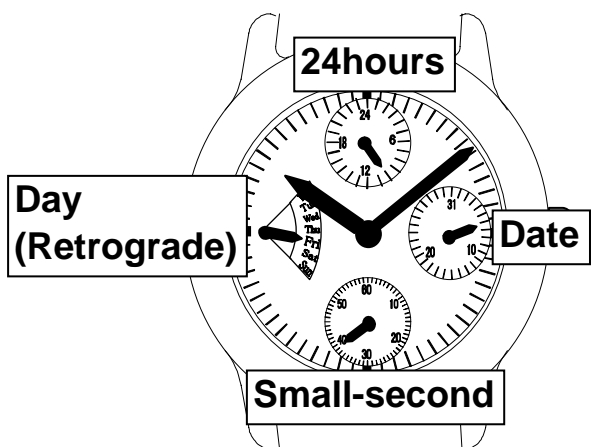
## VD8Series

Version-04

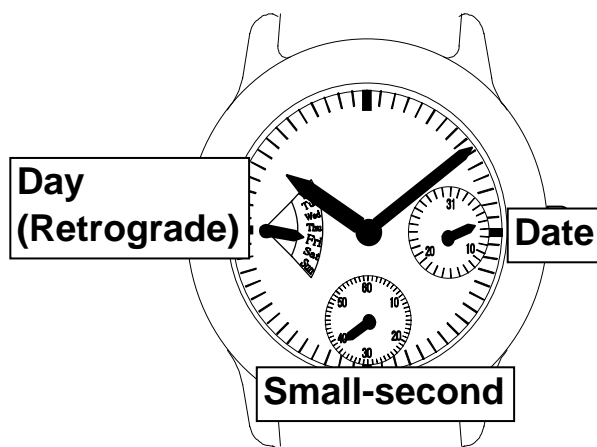
Item		Cal. No.	VD84A				
Movement			<div></div> <p><b>*Refer to the 2pages for other Cal. No. specifications.</b></p>				
Movement size	Outside diameter	φ23.70 mm 22.60 mm : between 12 o'clock and 6 o'clock sides 22.60 mm : between 3 o'clock and 9 o'clock sides					
	Casing diameter	φ23.30 mm 22.10 mm : between 12 o'clock and 6 o'clock sides 21.40 mm : between 3 o'clock and 9 o'clock sides					
	Total height	3.45 mm					
Time indication	Cal. No.	VD84A	VD85A	VD86A	VD87A		
	hands	6	5	5	5		
	2Hands (hour , minute)	O	O	O	O		
	Small Second hand (6H)	O	O	O	O		
	24Hour hand (12H)	O	×	×	×		
	Date -Calendar Hand (3H)	O	O	×	×		
	Date -Calendar Hand (2H)	×	×	O	O		
	Day -Calendar Hand(9H) <b>Retrograde</b>	O	O	×	O		
Driving System	Day -Calendar Hand (10H) <b>Retrograde</b>	×	×	O	×		
	Step motor						
Additional mechanism		Electronic circuit reset switch Second setting device Date setting					
Antimagnetic		≥ 1600 A/m					
Accuracy		Less than ±20seconds : Monthly rate at normal temperature range					
Battery		SR626SW (Silver oxide battery) Battery life is approximately 3 years					
Measuring gate by quartz tester		Use 10-second gate * Set the winding stem with crown at the normal position					
Jewels		0 Jewel					

**\* All specifications are subject to change without notice.**

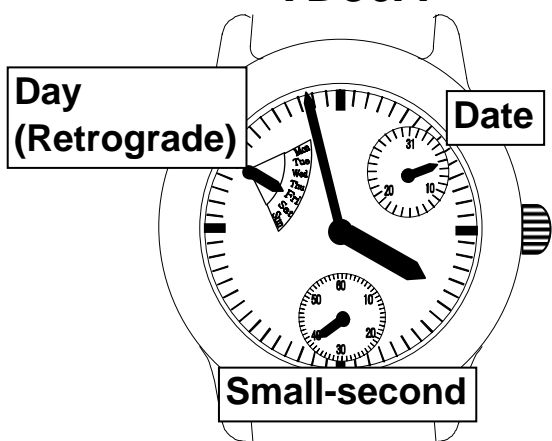
**VD84A**



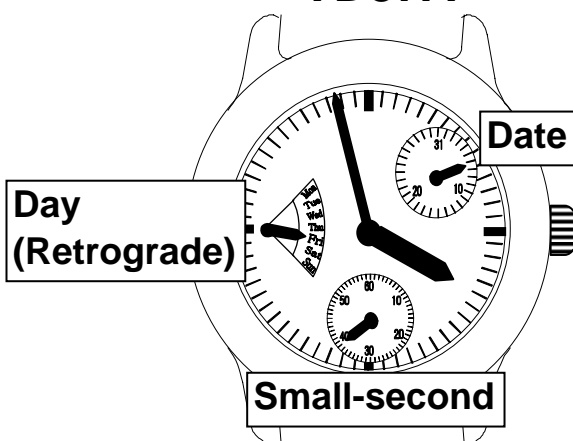
**VD85A**



**VD86A**



**VD87A**



Disassembling procedures Figs.

① ⇒ ②⑤

Reassembling procedures Figs.

②⑤ ⇒ ①

Lubricating : Types of oil

Oil quantity



Moebius A

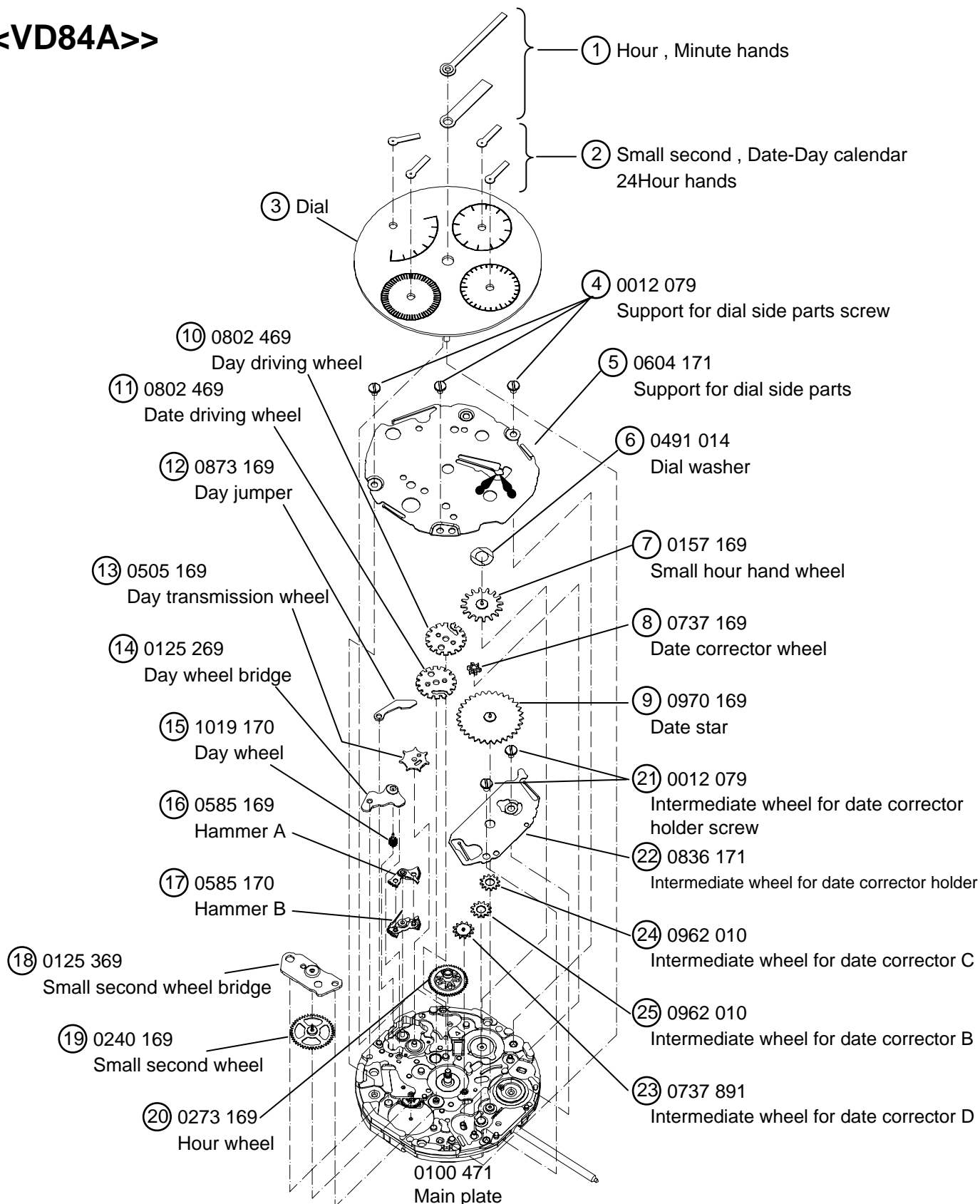


Moebius F



Normal quantity

## <<VD84A>>



Disassembling procedures Figs.

① ⇒ ②③

Reassembling procedures Figs.

②③ ⇒ ①

Lubricating : Types of oil

Oil quantity



Moebius A

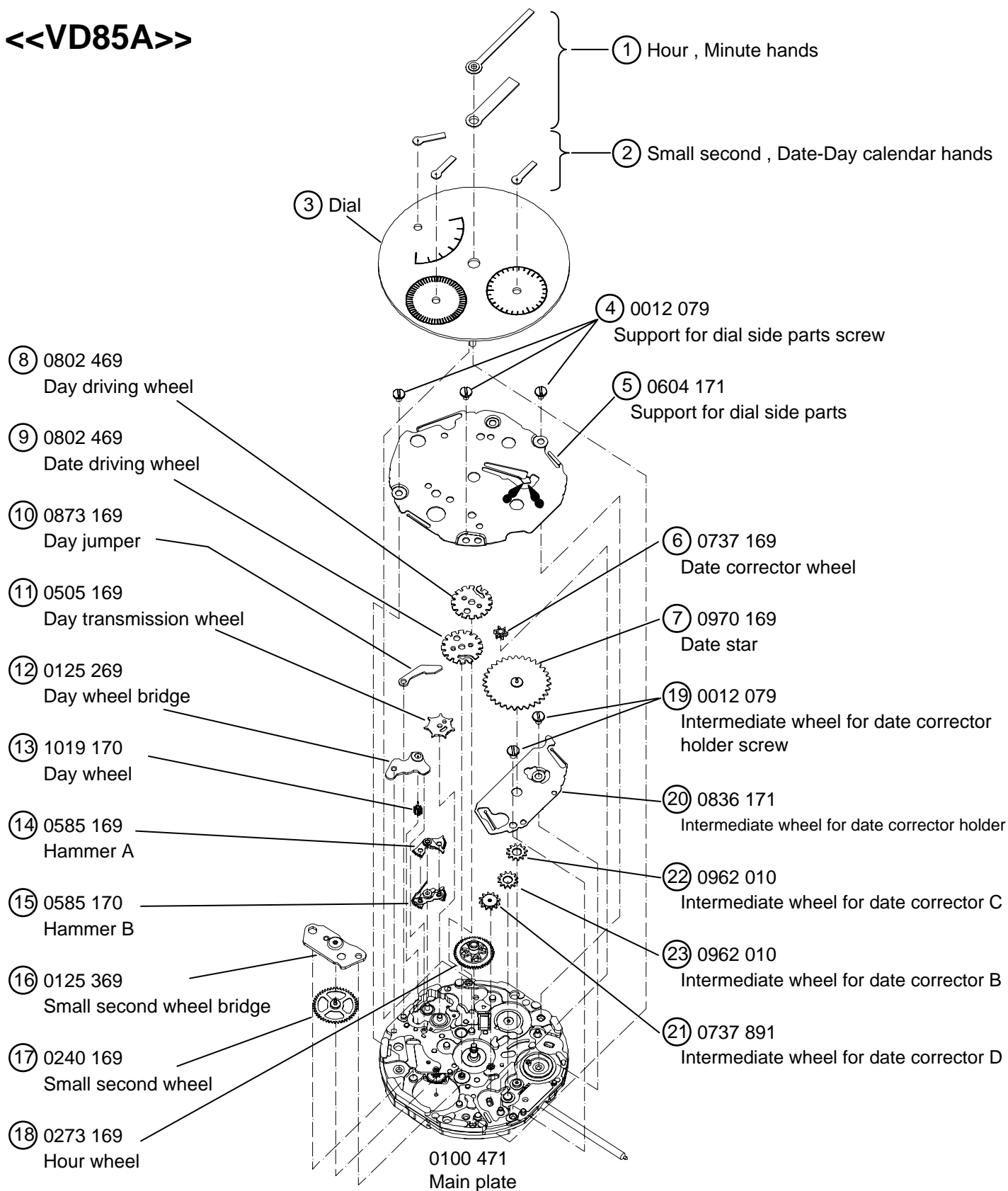


Moebius F



Normal quantity

## <<VD85A>>



Disassembling procedures Figs.

① ⇒ ②③

Reassembling procedures Figs.

②③ ⇒ ①

Lubricating : Types of oil

Oil quantity



Moebius A

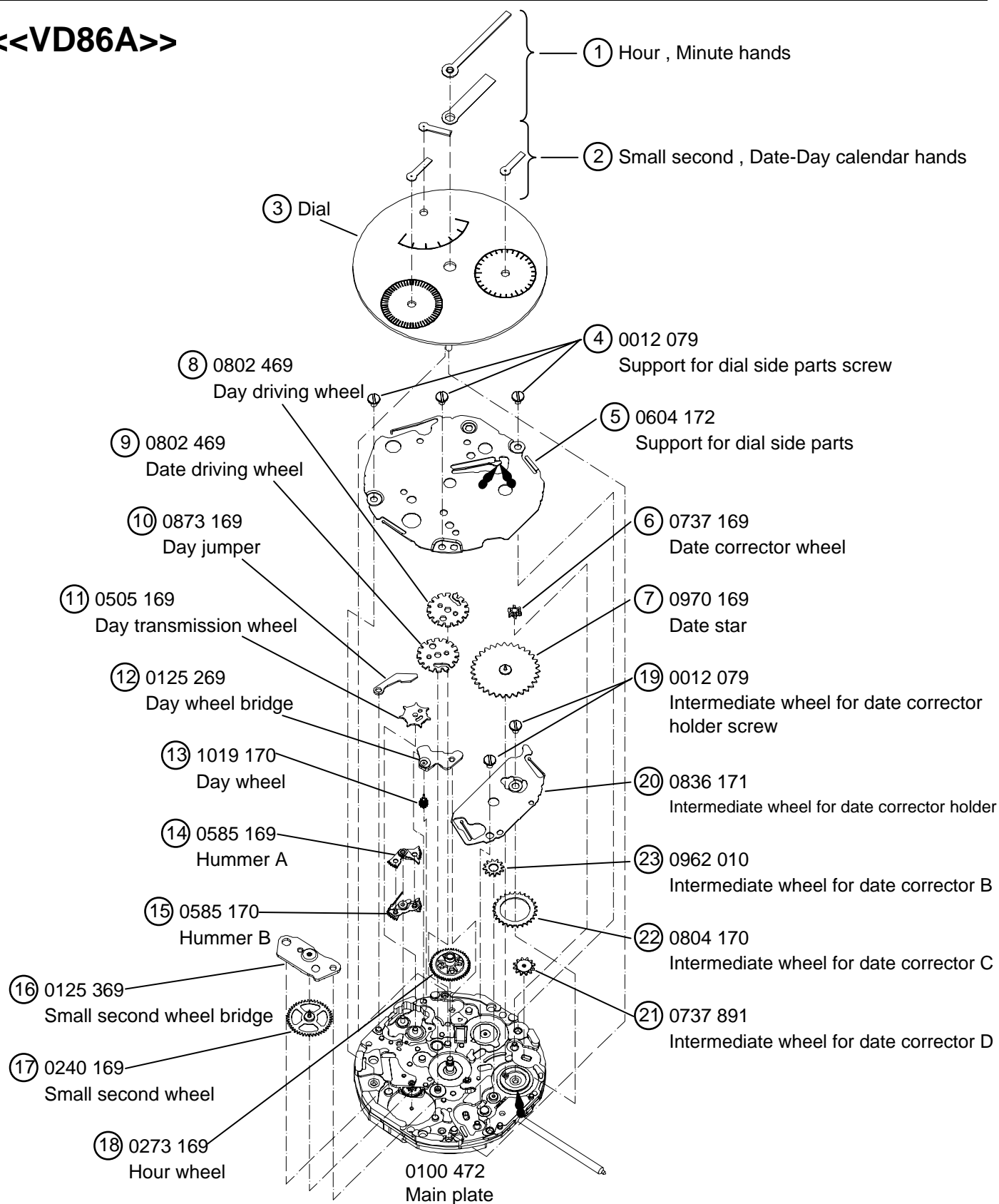





Moebius F



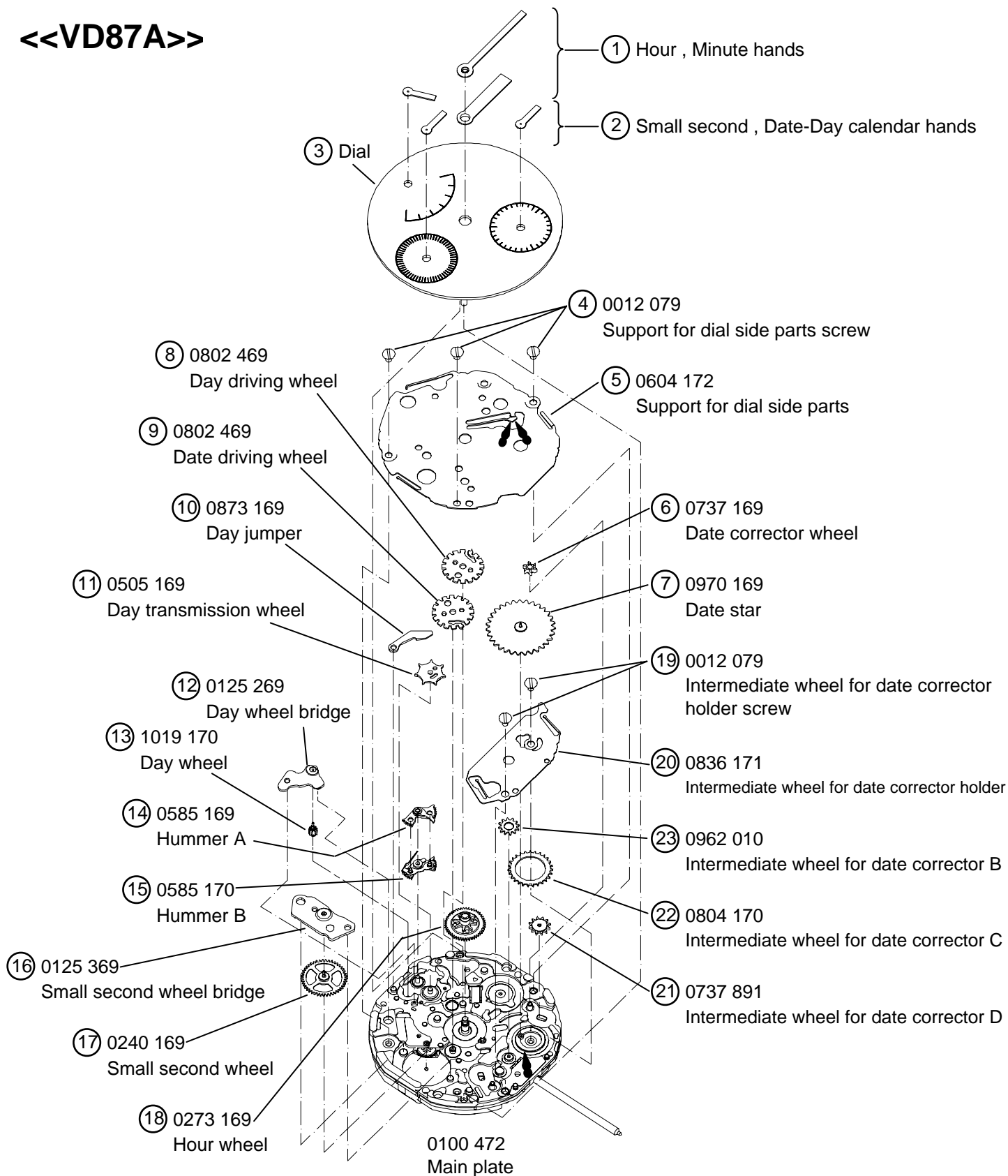
Normal quantity

## <<VD86A>>



Disassembling procedures Figs.	① ⇒ ②③	Lubricating : Types of oil	Oil quantity
Reassembling procedures Figs.	②③ ⇒ ①	 Moebius A  Moebius F	 Normal quantity

## <<VD87A>>



Disassembling procedures Figs.

① ⇒ ②②

Reassembling procedures Figs.

②② ⇒ ①

Lubricating : Types of oil

Oil quantity



Moebius A

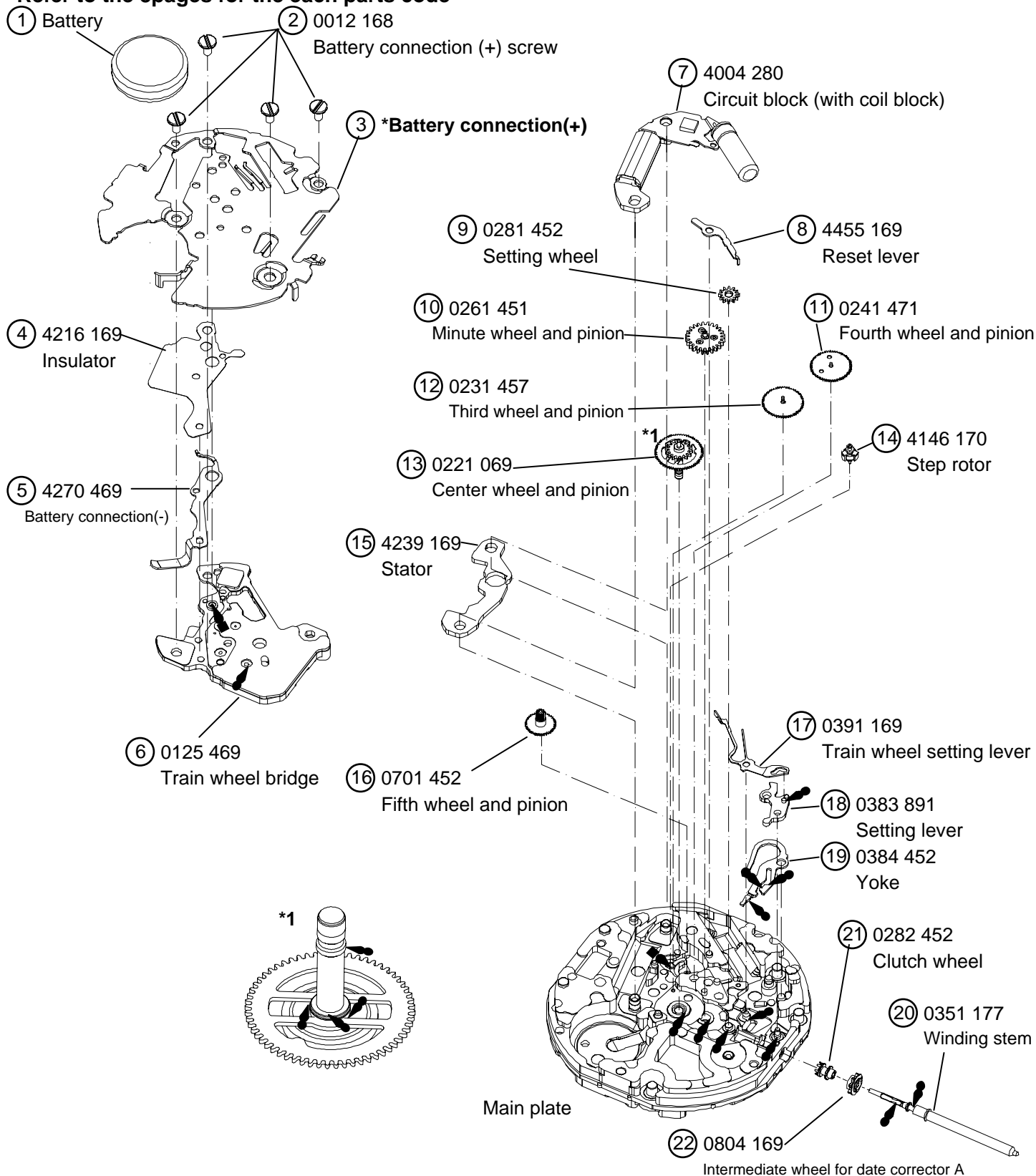


Normal quantity



Moebius F

**\*Refer to the 8pages for the each parts code**





Remarks:

Parts name	Parts code	VD84A	VD85A	VD86A	VD87A
Main Plate	0100 471	O	O	—	—
	0100 472	—	—	O	O
Battery connection(+)	4271 476	O	—	—	—
	4271 477	—	O	—	—
	4271 478	—	—	O	—
	4271 494	—	—	—	O
Intermediate wheel for date corrector C	0962 010	O	O	—	—
	0804 170	—	—	O	O
Dial washer	0491 014	O	—	—	—
Small hour hand wheel	0157 169	O	—	—	—
Support for dial side parts	0604 171	O	O	—	—
	0604 172	—	—	O	O

**\* All parts code are subject to change without notice.**

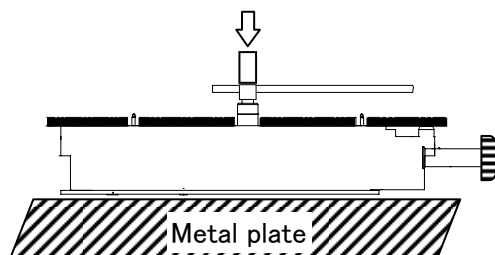
• The explanation here is only for the particular point of Cal.VD8A

# 1.REMARKS ON DISASSEMBLING AND REASSEMBLING

## (1)HAND

• How to install hands

Place the movement directly on a flat metal plate or the like to install the hands.



Note: How to procedure hands

① The state of movement is confirmed by the position of a right picture.

Pull out the crown to the second click position and rotation. The position is setting.

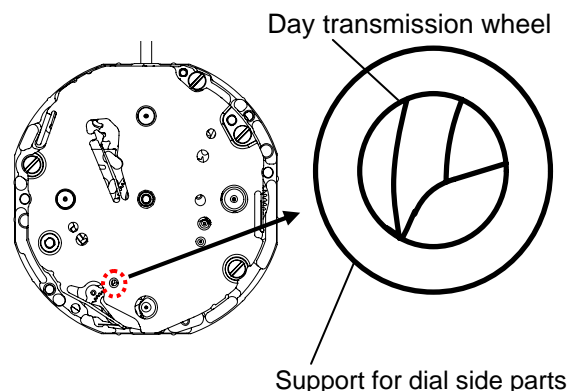
② Dial setting.

③ Install the Day calendar hand at the first position.

④ Install the Date calendar and small second hands at the 12 o'clock position.

⑤ Pull out the crown to the second click position and rotation it clockwise the change date.

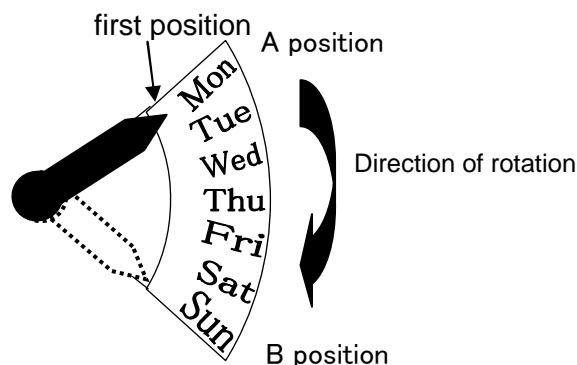
⑥ Install the 24hour and hour and minute hands at the 12 o'clock position.



## (2)Day calendar (Retrograde) hand

• Be quick in Day calendar hand

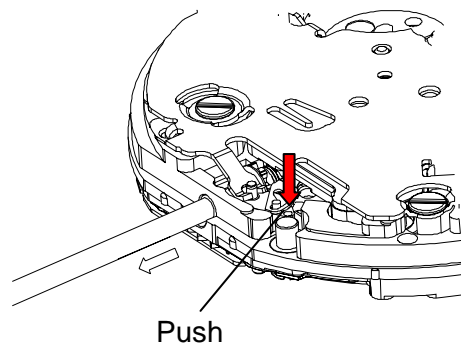
The hand instantaneously returns from B position to A position when one week passes.



## (3)Winding stem

• How to remove

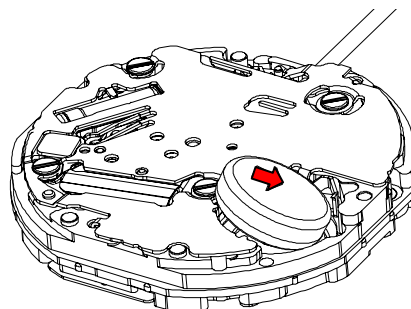
While pushing the indented portion of the arrow pull out the winding stem.



## (4) Battery

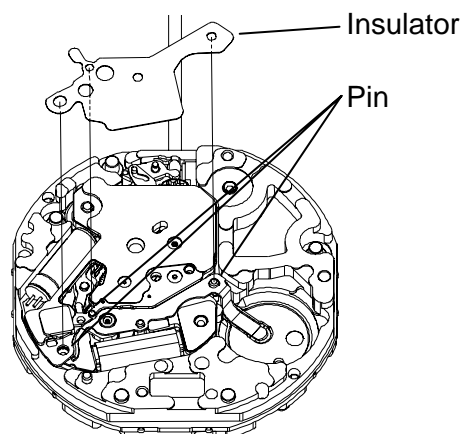
### •How to install

Insert the battery aslant in the direction shown by the arrow.  
Check the battery connection (+) securely touches the side face of the battery.



## (5) Insulator

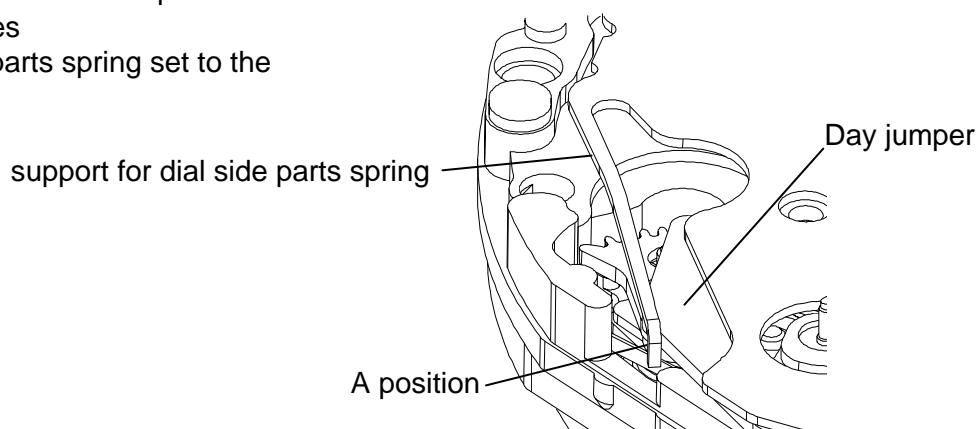
Notes: To insulate between the battery connection (+) and the battery connection (-), the insulator should put at the three pin securely as bellow.



## (6) Day jumper and support for dial side parts

### •Reassembling procedures

The support for dial side parts spring set to the day jumper. (A position)



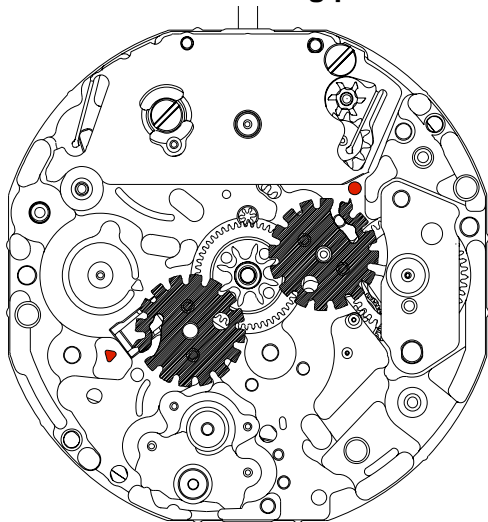
(6) Setting position (Notes at the time of disassembling and a reassembling)

- How to Date-Day driving wheels setting position

Note:

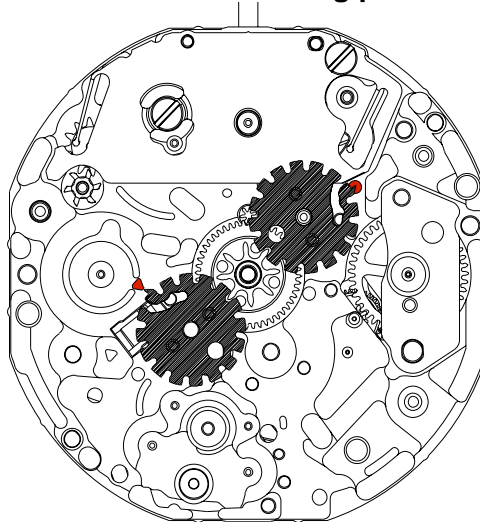
- The Date indicator finger of a Date driving wheels is setting position " O " mark of Main plate.
- The Day indicator finger of a Day driving wheels is setting position " Δ " mark of Main plate.

« Cal. VD84・VD85 setting position »

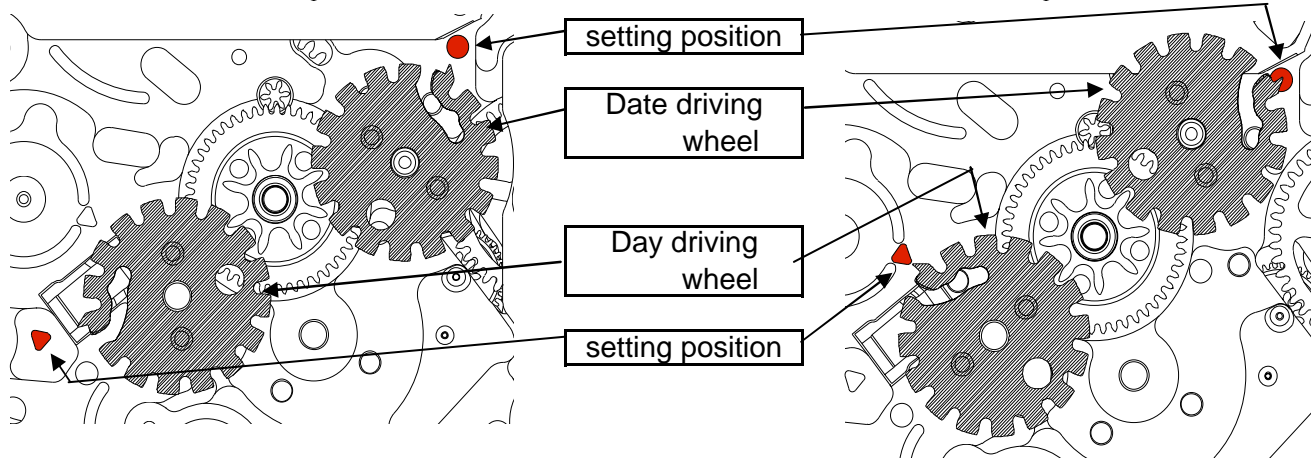


Enlargement

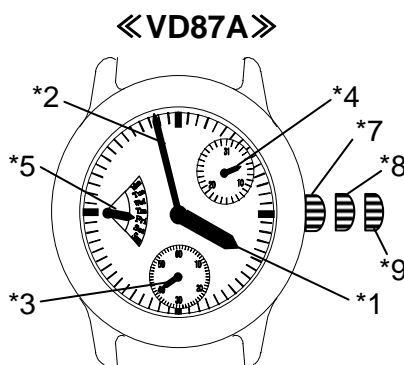
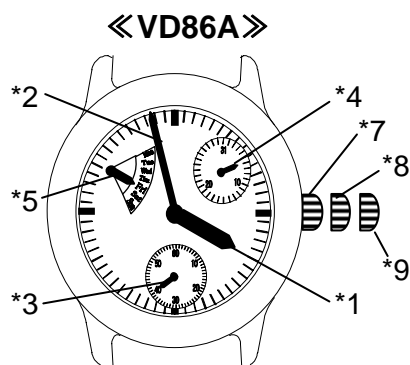
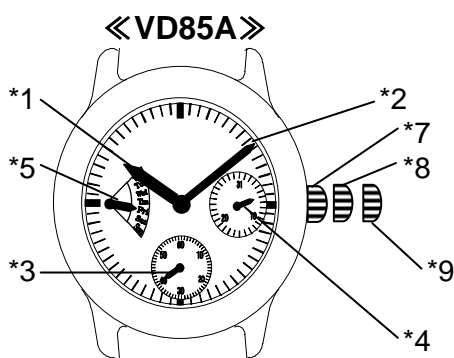
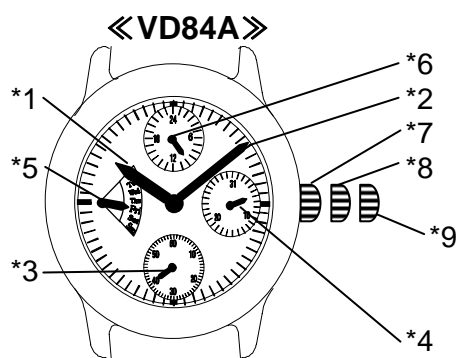
« Cal. VD86・VD87 setting position »



Enlargement



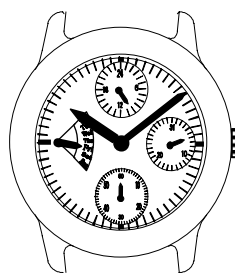
## DISPLAY AND CROWN OPERATION



Note:

- \*1: Hour hand
- \*2: Minute hand
- \*3: Small second hand
- \*4: Date calendar hand
- \*5: Day calendar hand (Retrograde)
- \*6: 24Hour hand
- \*7: Crown at normal position
- \*8: First click
  - Date setting (Quick change function)
- \*9: Second click
  - Time setting

## TIME SETTING



1. Pull out the crown to the second click when the small second hand is at the 12 O'clock position.

Turn the crown rotation to set the day of the week.

Turn the crown to set the hour and minute hands to the time.  
(check that AM/PM is set correctly)

\*Do not set the date between 10:00 PM and 2:00 AM

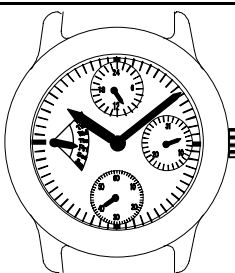
Otherwise, the day may not change properly. If it is necessary to set the date during that time period, First change the time to any time outside it, set the date and then reset the correct time.

Notes in time setting of Cal.VD8 series

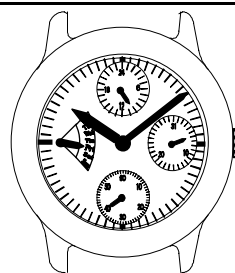
When time setting is done with counterclockwise, date hand might be reversed.

The function, there is no problem.

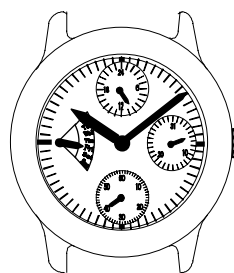
Please set the date by using the quick change function when the date shown was incorrect.



2. Push the crown back in to the normal position in signal.  
Pull out the crown to the first click .



3. Pull out the crown to the first click.  
turn the crown counterclockwise to set the data.  
(Quick change function)



4. Push the crown back in to the normal position.